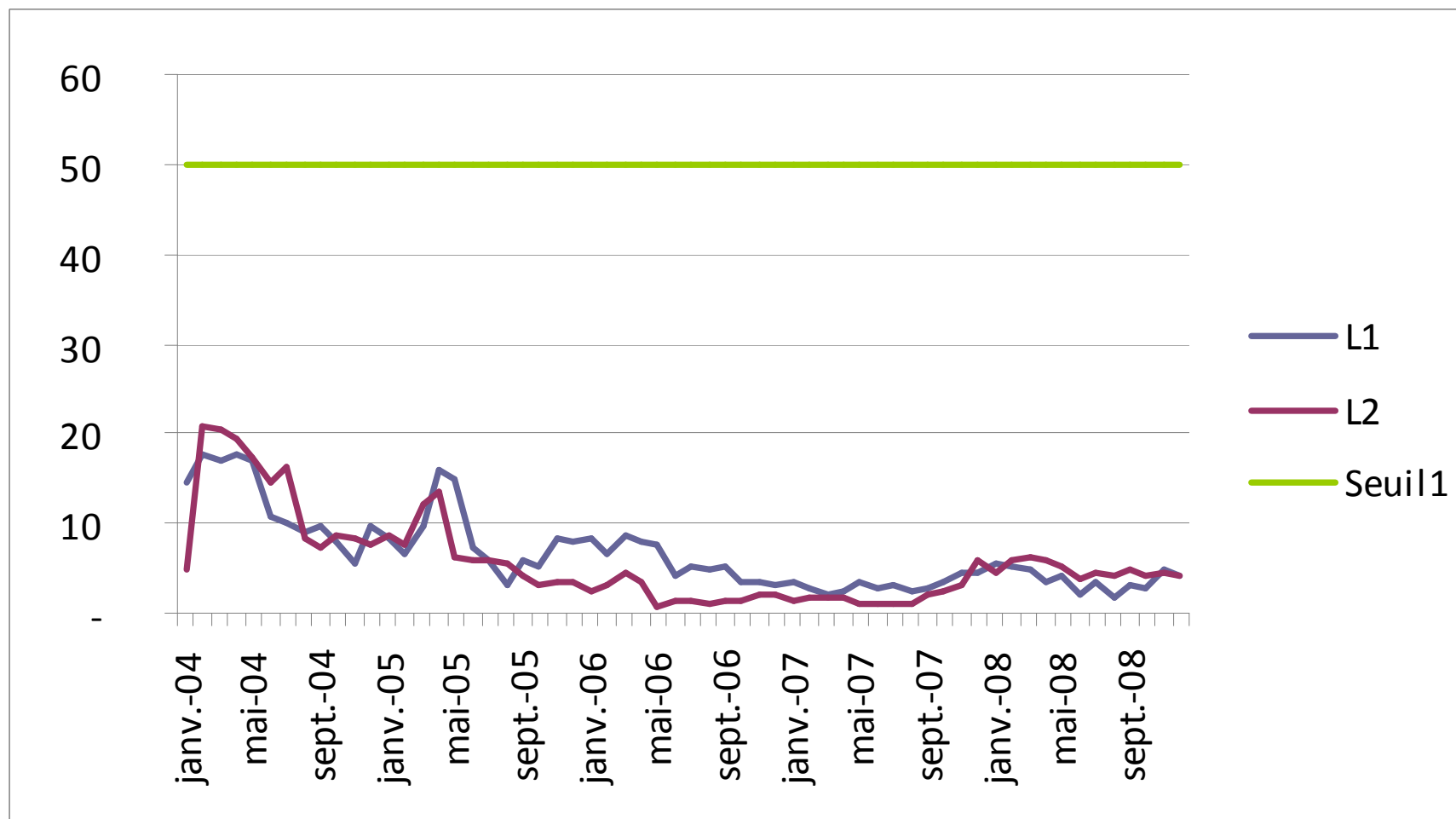
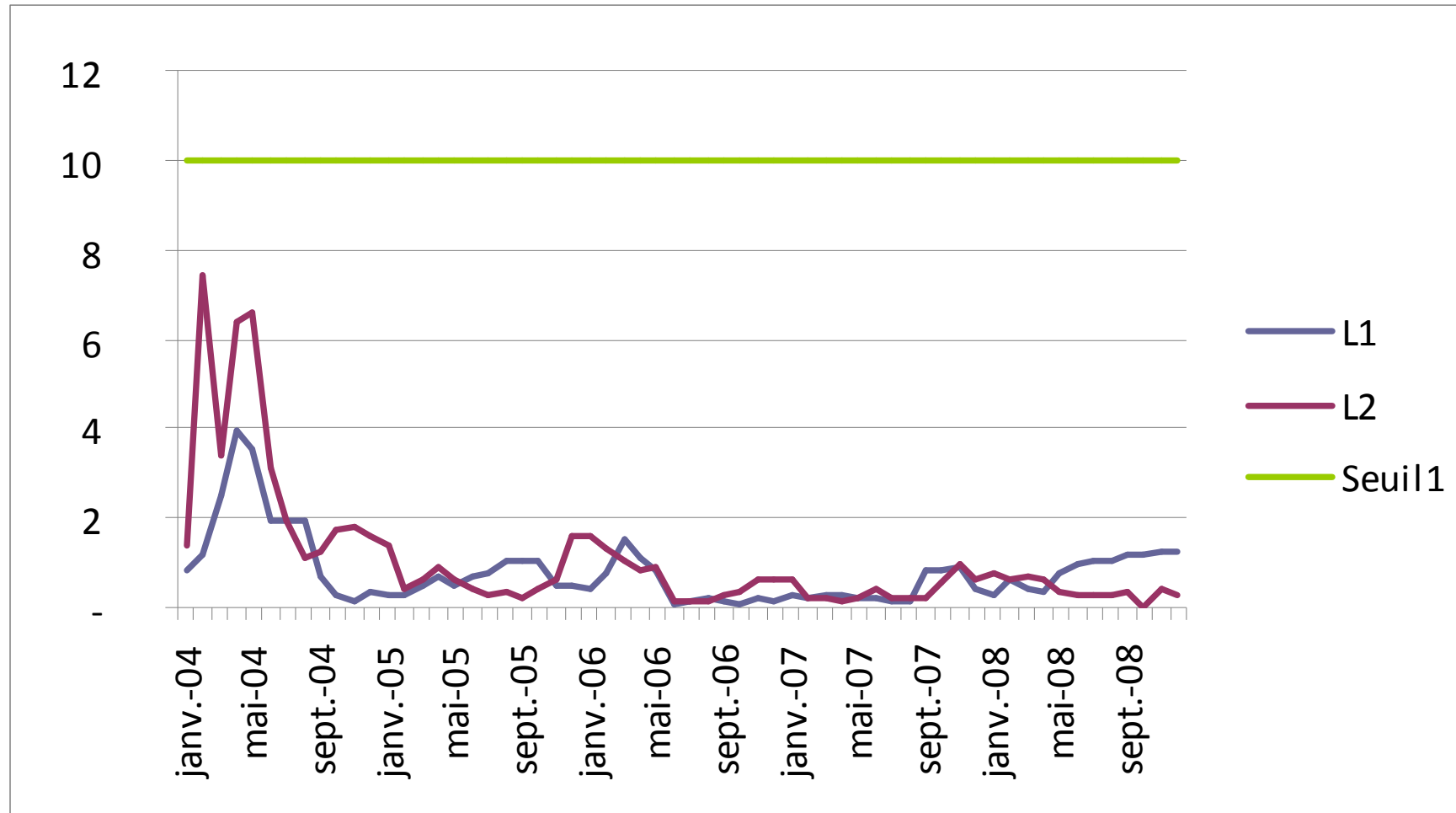


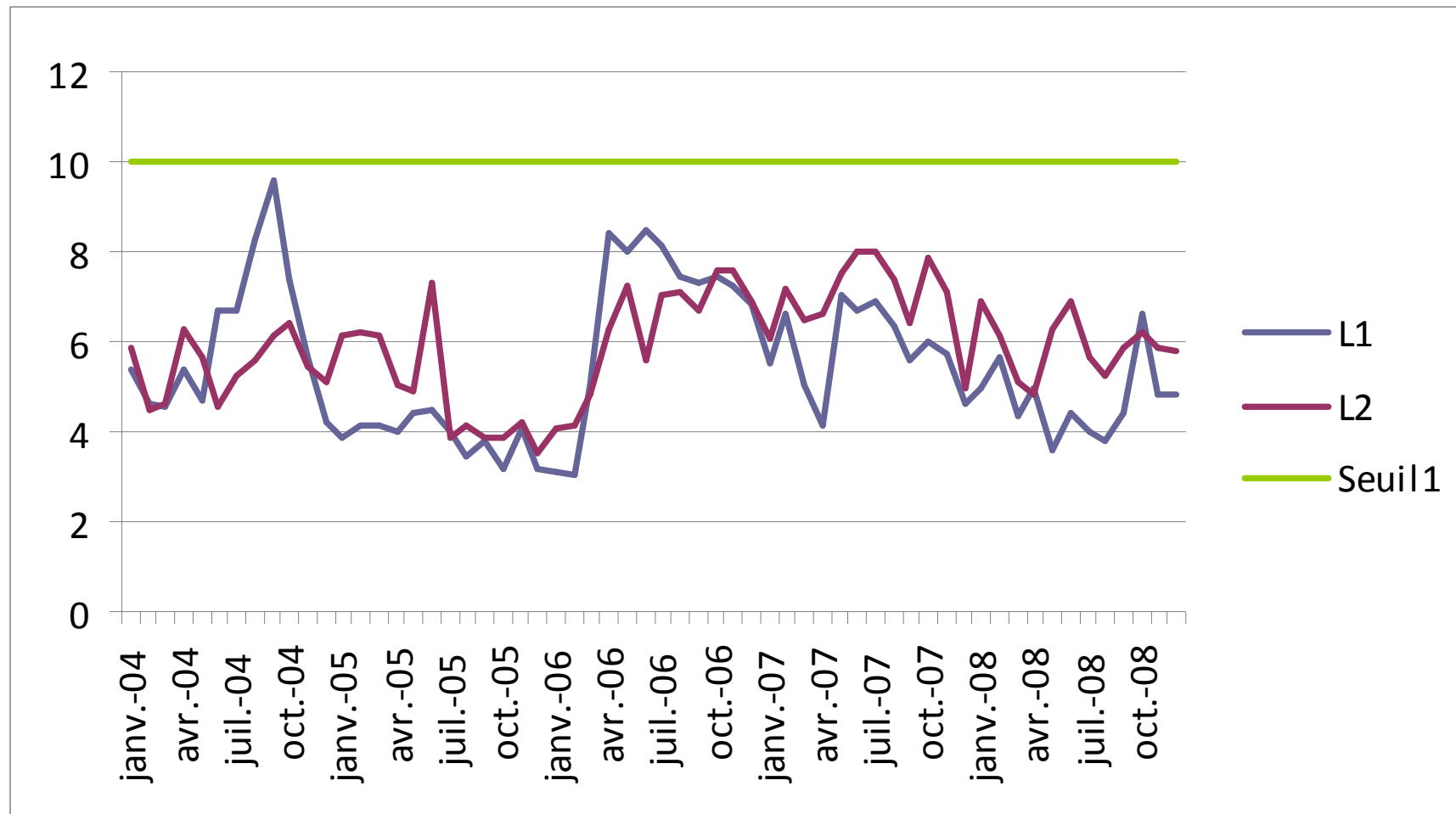
Monoxyde de carbone : CO (mg/Nm³)



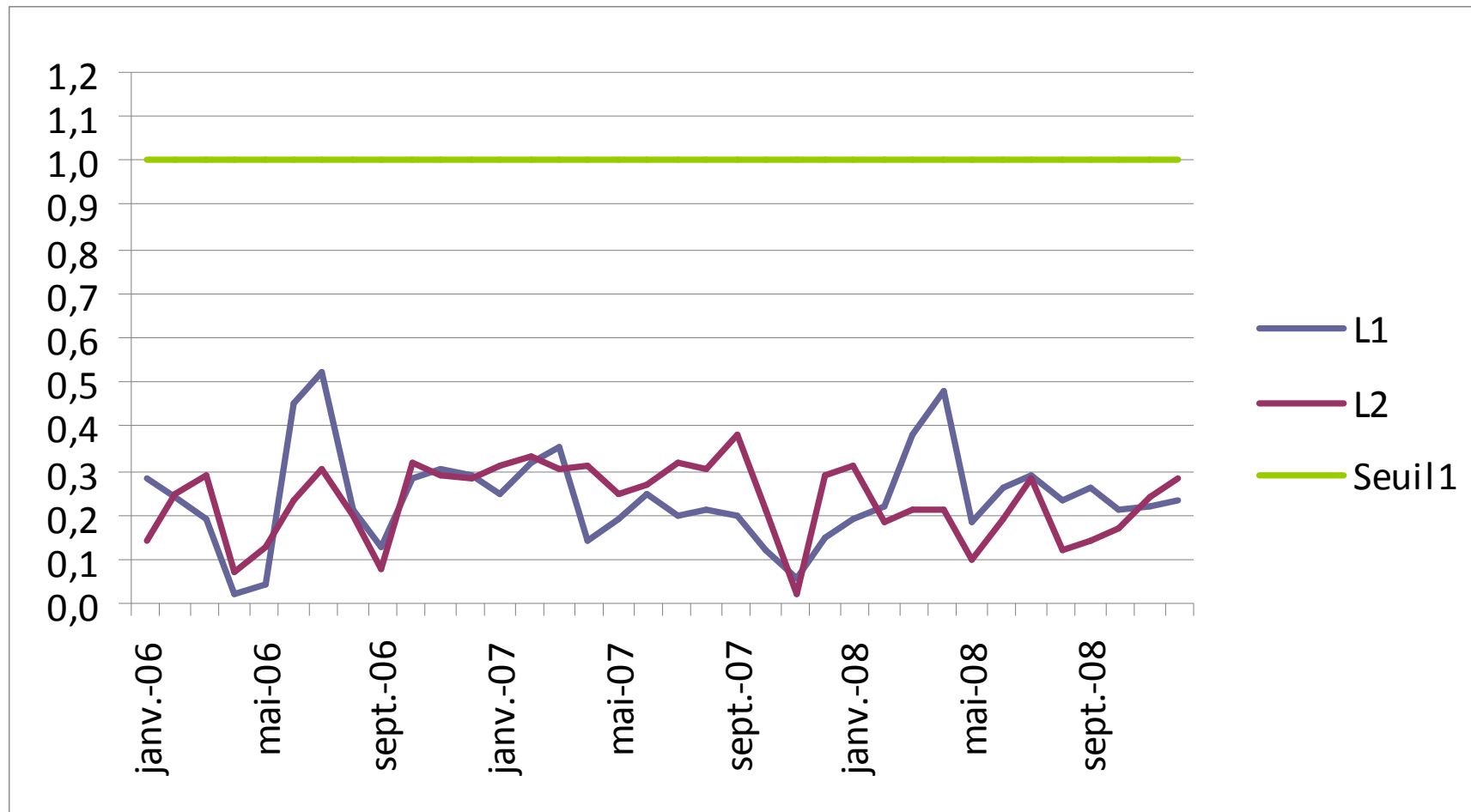
Carbone organique total : COT (mg/Nm³)



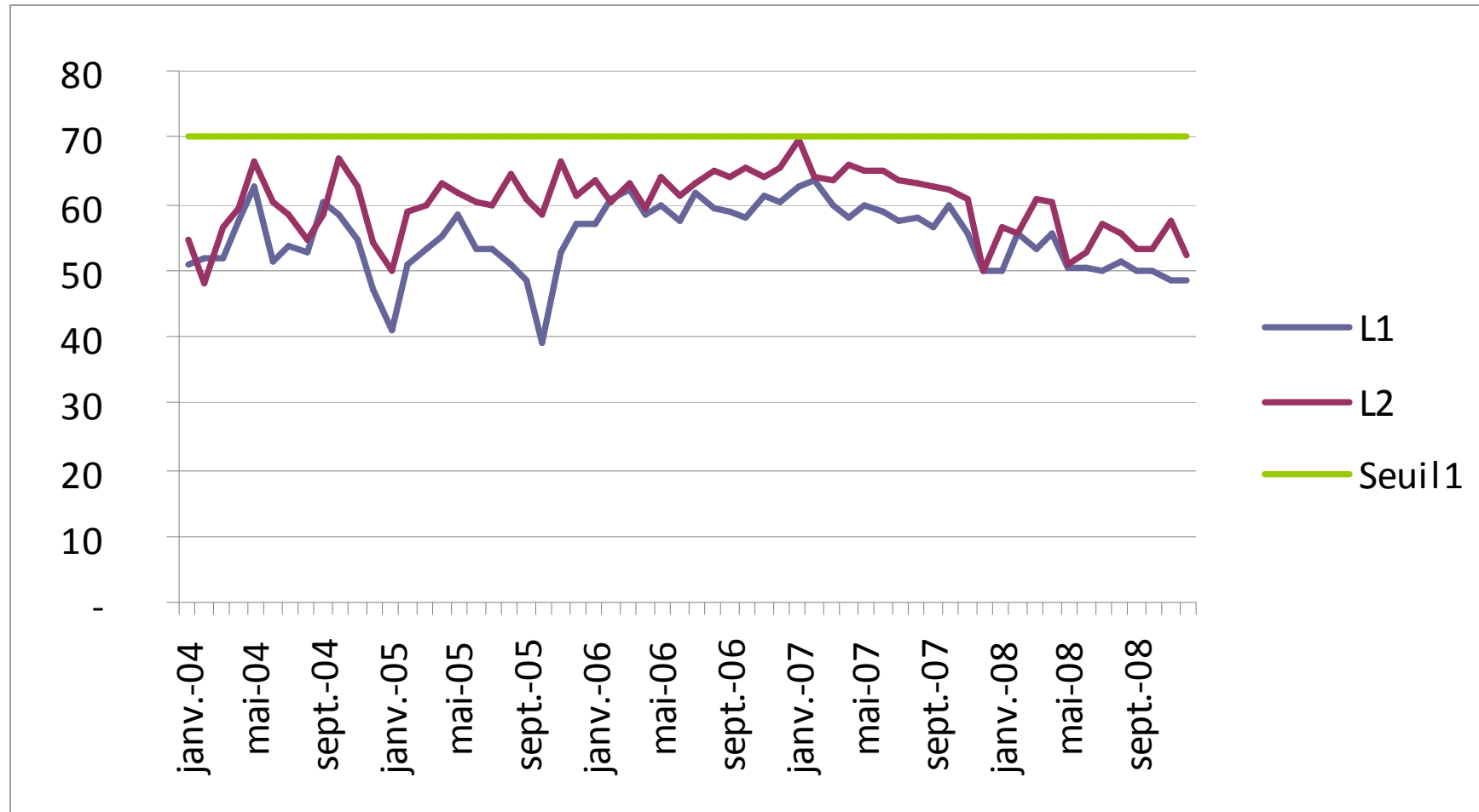
Acide chlorhydrique : HCl (mg/Nm³)



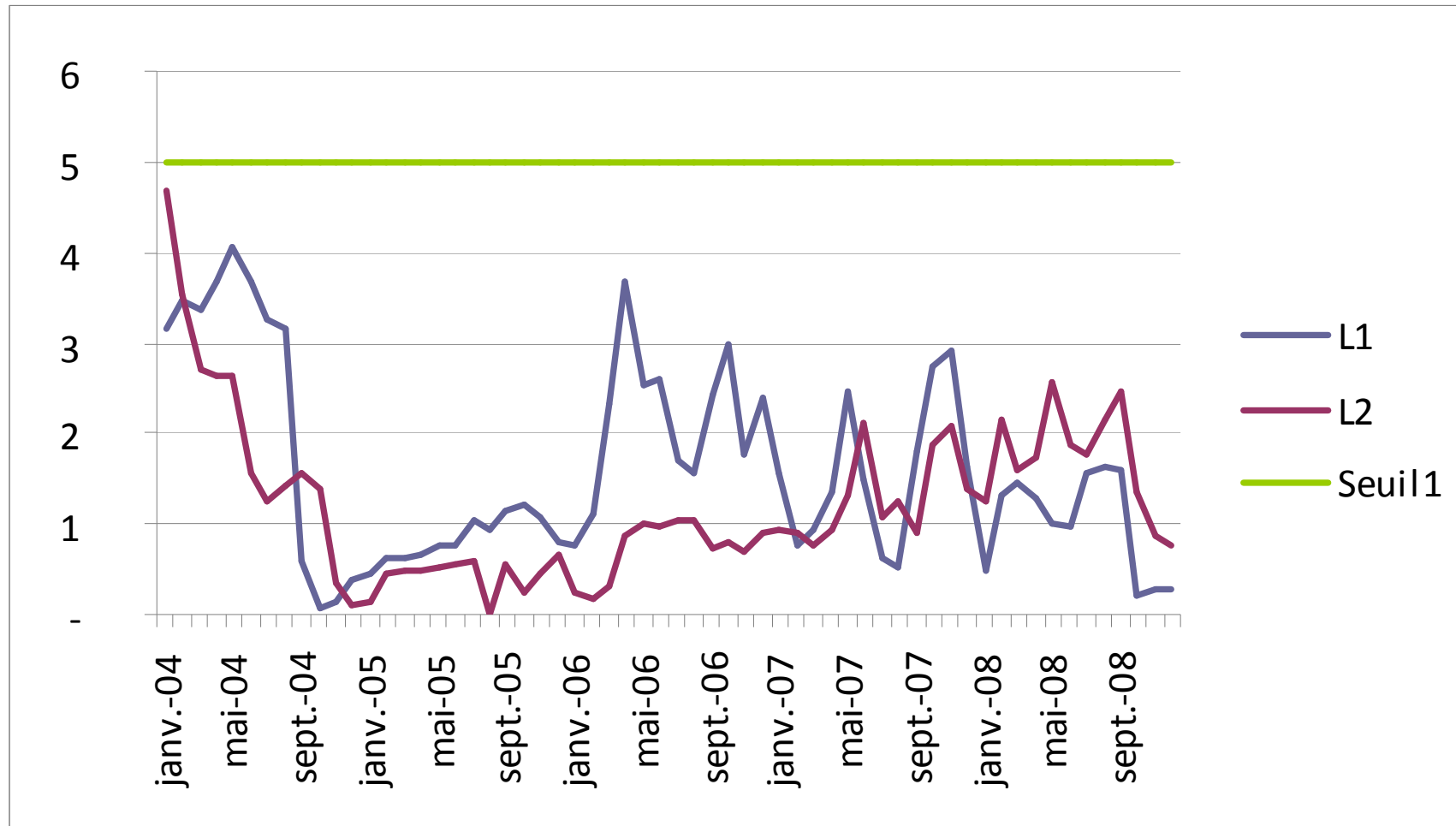
Acide Fluorhydrique : HF (mg/Nm³)



Oxydes d'azotes : NOx (mg/Nm³)



Poussières (mg/Nm³)



Dioxyde de soufre : SO₂ (mg/Nm³)

